

Rugged Tablet

RT112



Quick Start Guide

609892G V1.0

► Package

Please make sure the following contents are in the RT112 gift box. If something is missing or damaged, please contact your Unitech representative.

► The Package Contents

- Tablet PC
- Battery Pack
- USB-C Power Adaptor (power cord optional)
- Quick Start Guide

► Optional Accessories

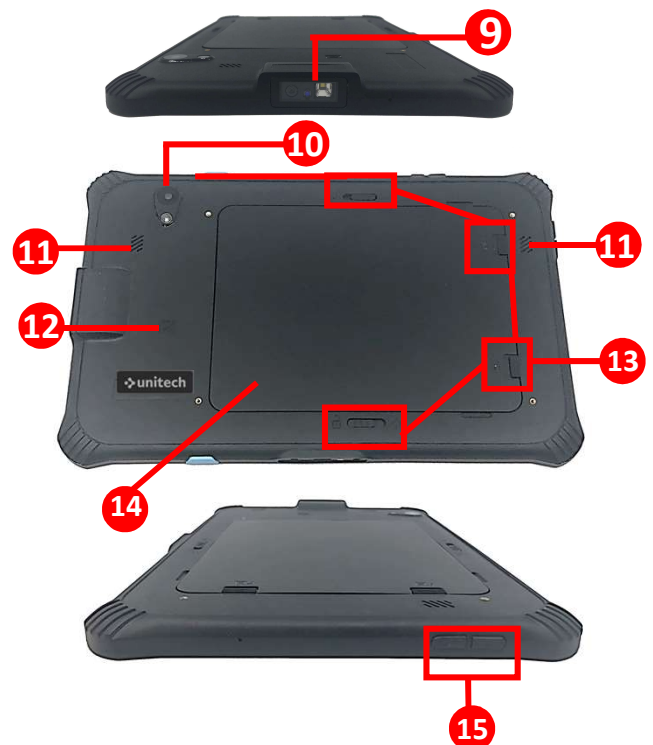
- Rotatable Hand Strap
- Shoulder Strap
- Screen Protector
- Capacitive Stylus Pen (5.5mm) with coil strap
- Office Cradle
- Vehicle Cradle
- 3-Pin EU Power Cord
- 3-Pin UK Power Cord
- 3-Pin US Power Cord

► Product View



- | | |
|--------------------|-------------------------|
| 1. Front Camera | 6. USB Type-C Connector |
| 2. Scan Engine | 7. Trigger Key |
| 3. Power Key | 8. Pogo Pin |
| 4. Programming Key | |
| 5. Trigger Key | |

► Product View



- | | |
|-----------------|------------------------|
| 9. Scan Lens | 13. Battery Cover Lock |
| 10. Rear Camera | 14. Battery Cover |
| 11. Speaker | 15. Volume Key |
| 12. NFC | |

▶ Install the Battery

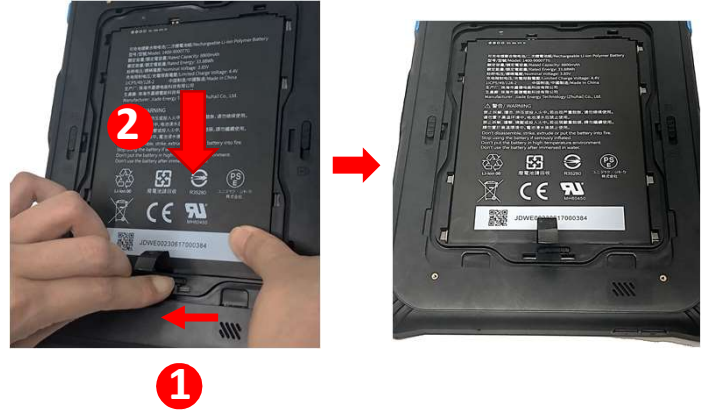
1. Push the four battery cover locks upwards to the unlock position.



2. Pick the battery cover from the groove on its side and lift upward to remove.



3. Push the battery lock at the bottom to the left (unlock) and keep holding it, then align the battery with the battery compartment and insert. Make sure you hear a “click” sound, and the battery should not fall off while the battery is being locked.



▶ Remove the Battery

1. First remove the battery cover (please refer to step 1. & step 2. in “Install the Battery”.)

2. Push the battery lock at the bottom to the left (unlock) and keep holding it, then pull the battery strap and lift upward to remove the battery.



▶ Getting Started

Before starting to use the tablet, we would like to suggest you follow the illustrations below to begin to use the tablet.



WARNING!

There is a risk of fire and burns if the battery is handled improperly. DO NOT disassemble, crush, puncture, short external contacts, or dispose the battery pack in fire or water. DO NOT attempt to open or service the battery. Dispose used batteries according to local recycling guidelines in your area.

CAUTION!

To ensure the unit working properly, please keep all connectors away from the contaminants such as dust, grease, mud, and water. Negligence may cause the unit to lose communication, short circuit, or overheated. If the connector is damaged, please ensure the connector is fully repaired before using the unit to avoid short circuiting.



<http://www.ute.com/>

▶ Checking LED Status

LED	Description
Red Light	<ul style="list-style-type: none"> Battery Charging Twinkling to indicate battery low status (less than 15%)
Green Light	<ul style="list-style-type: none"> Battery Fully charged Barcode scan good read
Blue Light	Message

If scanner app is running, LED is controlled by scanner app. No LED (Red and Green) display when battery is out. (even AC IN)